



User Manual

Digital Door Lock

SEMI MEDIUM



Please scan the QR code
to download Installation

Table of Contents

General Product Information

1. Components of the Digital Door Lock	1
2. Technical Parameters	1
3. Accessories of the Digital Door Lock	2
4. Additional Accessories for Door Thickness	3
5. Dimensions of the Digital Door Lock	4
6. Product Information	7

Functionality of SEMI MEDIUM

7. Functions and Usage	9
8. Factory Status	10
9. How to Perform a Factory Reset	10
10. Lock / Unlock from the Inside	11
10.1 Locking with the Handle	11
10.2 Unlocking with the Handle	11
10.3 Locking and Unlocking the Deadbolt with the Thumbturn Knob	12
10.4 Locking from the internal lock	12
11. Lock / Unlock from the Outside	13
12. Setup Instructions	14

User Management

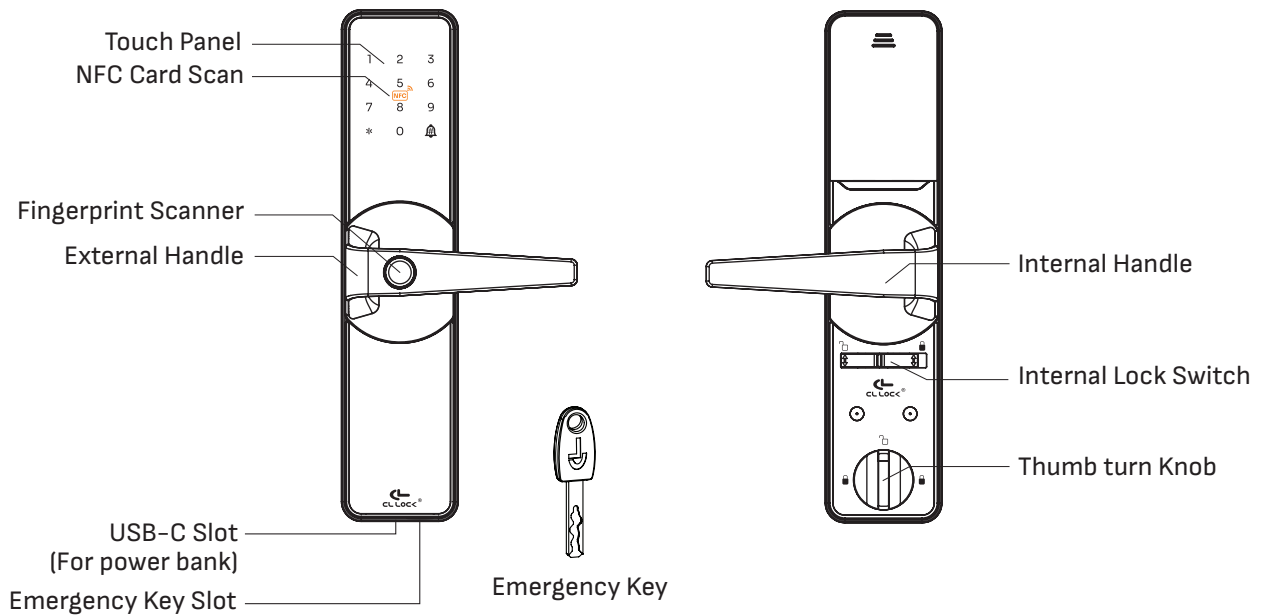
13. Administrator Management	16
13.1 Add Administrator	16
13.2 Delete Administrator	17

User Settings	18
14. User Settings	19
14.1 Add User	19
14.2 Delete User	20
14.3 Delete All User	21
System Settings	22
15. System Settings	23
15.1 Time Setting	23
15.2 Volume Adjustment	24
15.3 Normally Open	25
15.4 Double Verification	26
15.5 Anti-Tampering (ON/OFF)	27
15.6 Record Info	28
Remote Management	29
16. Network Setting	30
17. Code for Changing Languages	32
18. USB-C Port Usage	33
19. Unlocking with The Emergency Key	34
20. Product Warranty Policy	36
21. Safety Manual and Precautions	37
22. Additional Information	37

DIGITAL DOOR LOCK SEMI MEDIUM



1. Components of the Digital Door Lock



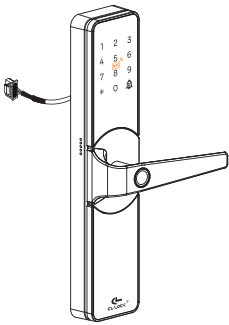
Note: The external appearance may differ depending on the lock model.

2. Technical Parameters

Administrator:	10 ID (No. 001–010)
User:	290 ID (No. 011–300)
Ways to Unlock:	Password, Fingerprint, NFC card, Emergency key, Application.
Network:	Wi-Fi 2.4 G
Power:	4 Pieces of AA alkaline battery
Low Battery Warning:	4.8–5 V
Emergency Power Supply:	USB type-C
Password Length:	6–10 digits (fake password can be up to 29 digits.)
Product Dimensions:	see section 5, page 4

3. Accessories of the Digital Door Lock

1



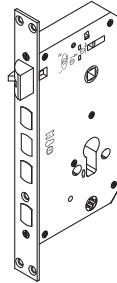
External handle lock (1 set)

2



Rubber gasket for external handle lock (1 pc.)

3



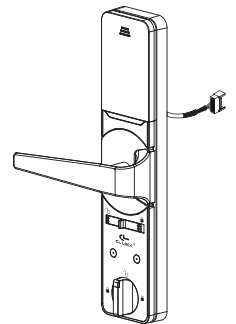
Mortise lockcase 6068 or 7068 (1 set)

4



Rubber gasket for internal handle lock (1 pc.)

5



Internal handle lock (1 set)

6



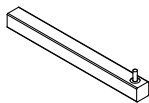
Screw M5x40 mm (3 pcs.)

7



M5 threaded connector Length: 30 mm (3 pcs.)

8



Handle spindle Length: 80 mm (1 pc.)

9



Thumb turn spindle Length: 55 mm (1 pc.)

10



Locking clip wire for thumb turn spindle (1 pc.)

11



Emergency key (2 pcs.)

12



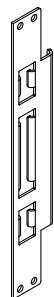
Screw hole cover (2 pcs.)

13



Strike box (1 pc.)

14



Strike plate (1 pc.)

15



M4 x 20 mm screw for mortise lock (4 pcs.) and for strike plate (4 pcs.)

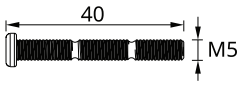
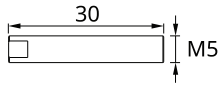
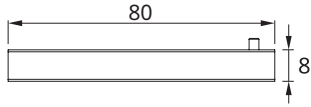
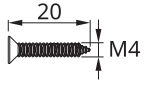
16



NFC card (2 pcs.)

4. Additional Accessories for Door Thickness

Door thickness: 35–55 mm. If the door thickness falls outside this range, please contact us for more information. Please select the appropriate accessories based on the door thickness.

No	Details	Specification (mm)	Quantity
6	Screw M5×40 mm		3
7	M5 threaded connector Length: 30 mm		3
8	Handle spindle Length: 80 mm		1
15	Screw M4×20 mm		8

5. Dimensions of the Digital Door Lock

CL-M1

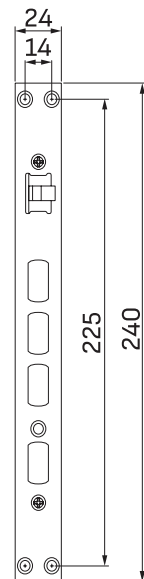
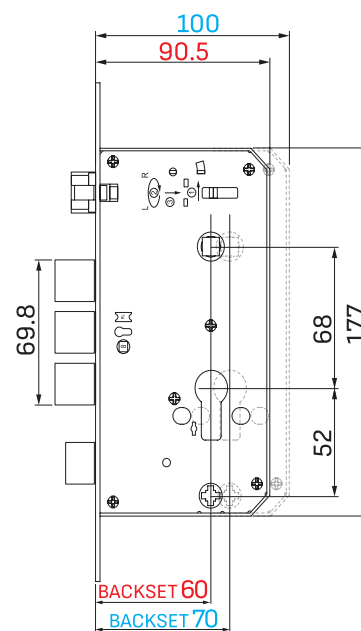
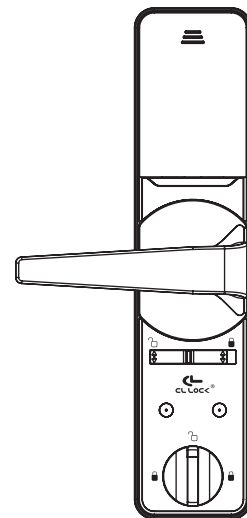
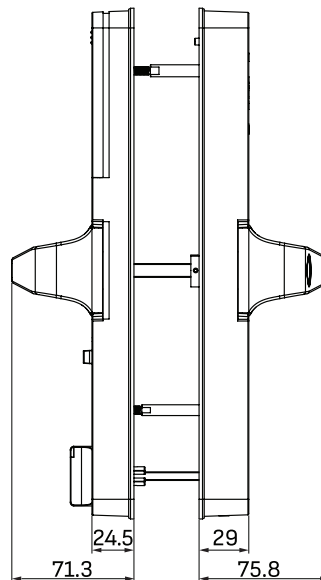
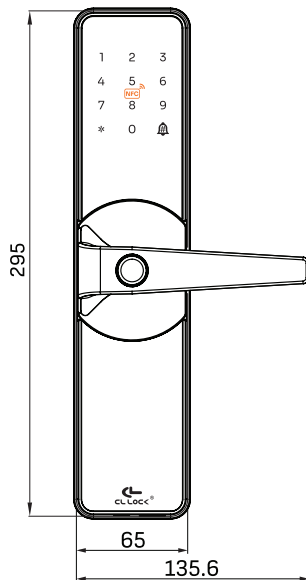
Unit: Millimeters

Internal

- Excludes handle $65 \times 295 \times 24.5$ mm
- Includes handle $135.6 \times 295 \times 71.3$ mm

External

- Excludes handle $65 \times 295 \times 29$ mm
- Includes handle $135.6 \times 295 \times 75.8$ mm



BACKSET	LOCKCASE
60 mm	6068
70 mm	7068

CL-M2

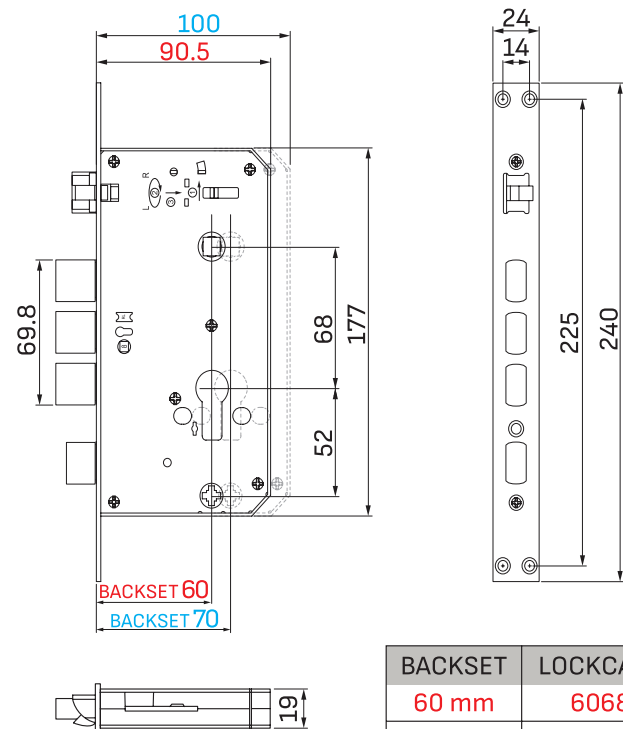
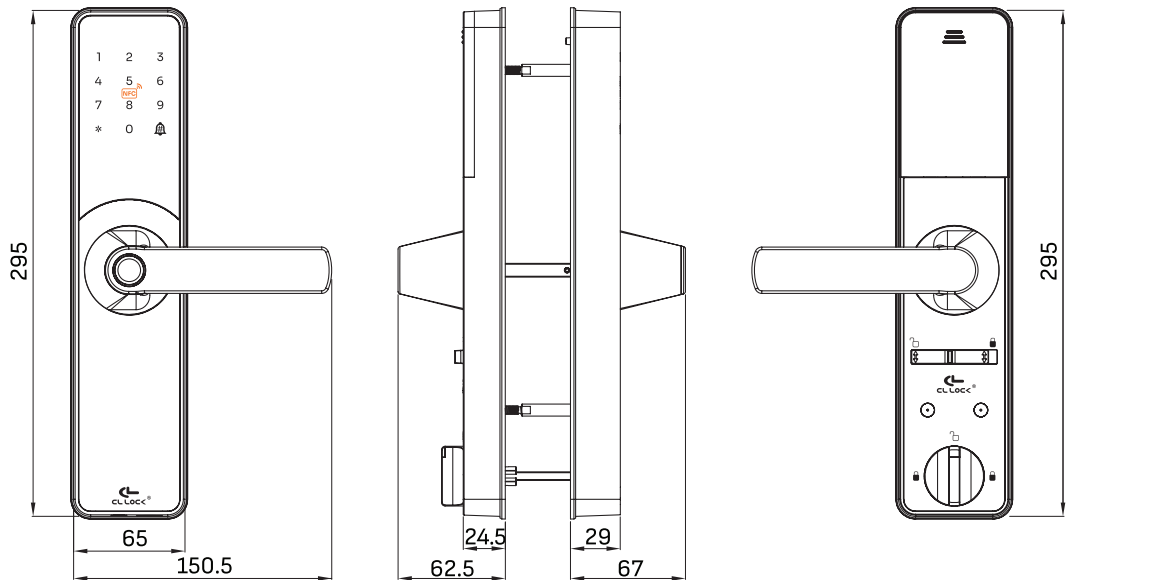
Unit: Millimeters

Internal

- Excludes handle 65 × 295 × 24.5 mm
- Includes handle 150.5 × 295 × 62.5 mm

External

- Excludes handle 65 × 295 × 29 mm
- Includes handle 150.5 × 295 × 67 mm



BACKSET	LOCKCASE
60 mm	6068
70 mm	7068

CL-M3

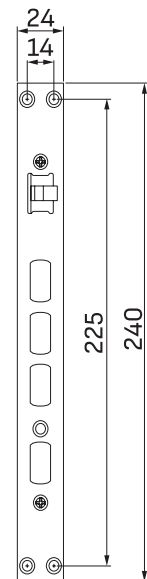
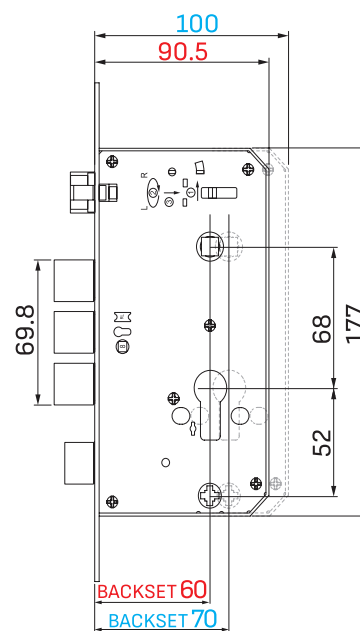
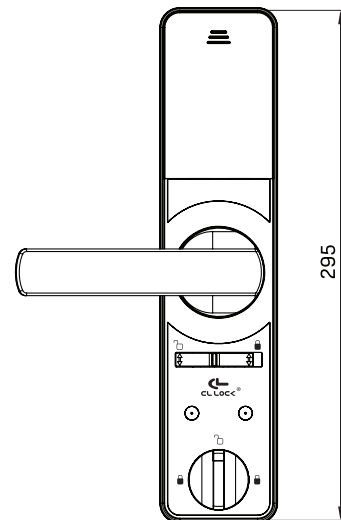
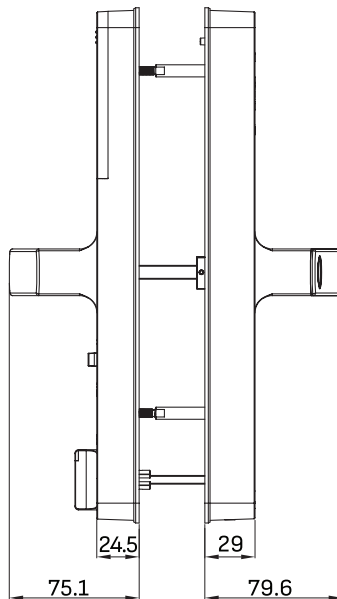
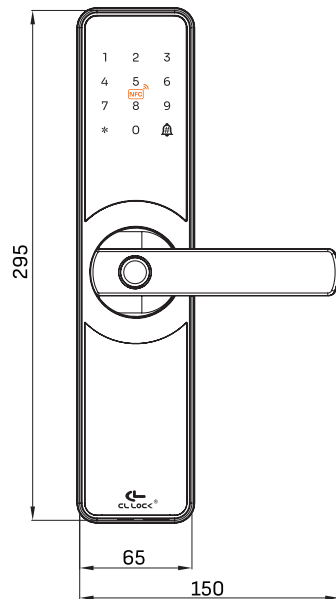
Unit: Millimeters

Internal

- Excludes handle 65 × 295 × 24.5 mm
- Includes handle 150 × 295 × 75.1 mm

External

- Excludes handle 65 × 295 × 29 mm
- Includes handle 150 × 295 × 79.6 mm



BACKSET	LOCKCASE
60 mm	6068
70 mm	7068



6. Product Information

1. Fingerprint registration requires scanning the finger 5 times for complete registration.
2. Card registration and usage should be within a distance of 0–30 mm for accurate registration and functionality.
3. Entering the wrong password more than 5 times will trigger an alert, and the lock will remain locked for 180 seconds.(Registered fingerprints and NFC cards can still be used normally.)
4. A fake password can be up to 29 digits long.
5. If the lock is tampered with, the system will lock for 180 seconds.
6. If the battery is low, the application cannot be connected.
7. To check the software version, press 99#.
8. The first registered admin cannot be deleted.
9. To repeat instructions, press 0. To go back, press *.

Functionality

SEMI MEDIUM



7. Functions and Usage

1. Definition of Terms

- 1.1 Admin: Refers to the system administrator or homeowner.
- 1.2 User: Refers to other users or residents.

2. Unlocking from Outside

- 2.1 Unlock using fingerprint, password, NFC card, mobile application, or emergency key. Operate together with the mechanical mechanism by pushing the handle downward to unlock. (see section 11 page 13).

3. Unlocking from Inside

- 3.1 Unlock by pushing the handle downward (see section 10.2, page 11).

4. Locking from Inside

- 4.1 Lock by pushing the handle upward (see section 10.1, page 11).
- 4.2 Dead Lock System: Rotate the Thumb turn Knob (people from outside will not be able to open it) (see section 10.3, page 12)
- 4.3 For internal lock systems, slide the internal lock switch to the right (this prevents regular users from unlocking it; see section 10.4, page 12).

5. Locking from Outside

- 5.1 Lock by pushing the handle upward (see section 11, page 13).

6. Button Functions

- 6.1 Press *: To go back.
- 6.2 Press #: To confirm/accept.

7. Touch Activation Touching the screen will activate the system and wake it up for operation.

8. Configuration Instructions While configuring any function, do not allow the screen light to turn off. If it does, restart the configuration process.

9. Confirmation After Configuration

After successfully completing the configuration, press * to return, or wait for the system to exit automatically.

8.Factory Status

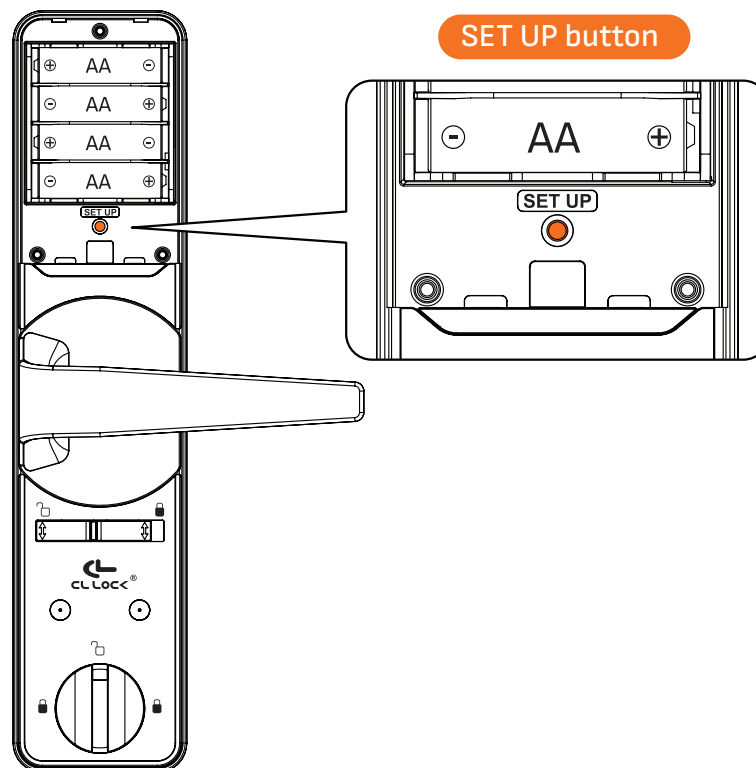
In factory status, before registration, fingerprint or NFC card can be used to unlock at any time.

9.How to Perform a Factory Reset

To perform a factory reset, press the SET UP button located inside the internal handle lock beneath the battery compartment.

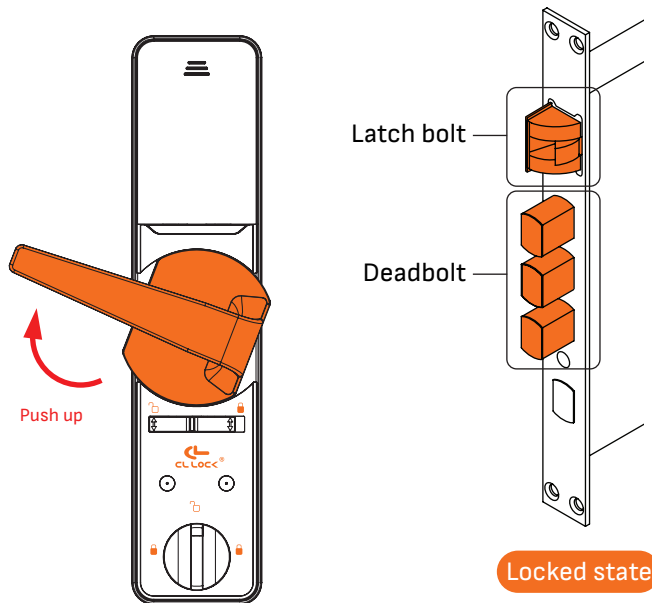
Instructions:

1. Remove the battery cover.
2. Tap the touch panel to wake up the device.
3. Press and hold the SET UP button using a pointed tool for 5 seconds. The system will then perform a factory reset.



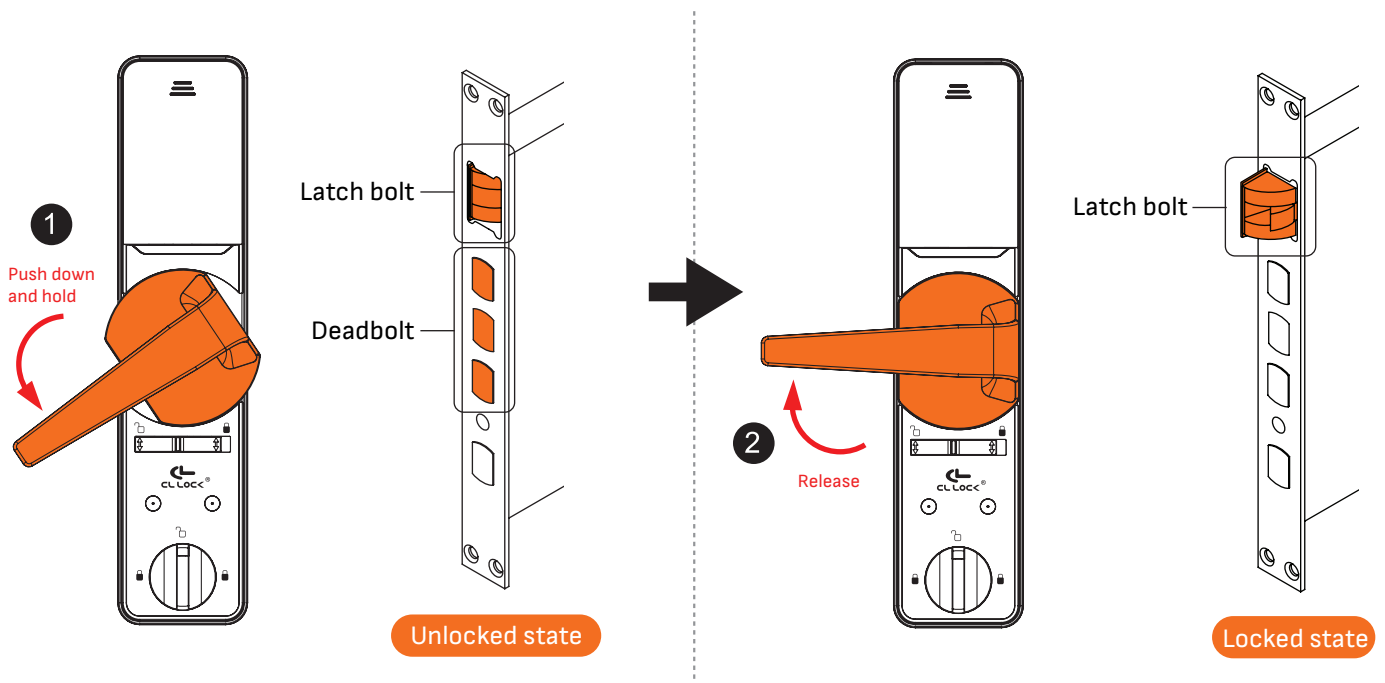
10.Lock / Unlock from the Inside

10.1 Locking with the Handle



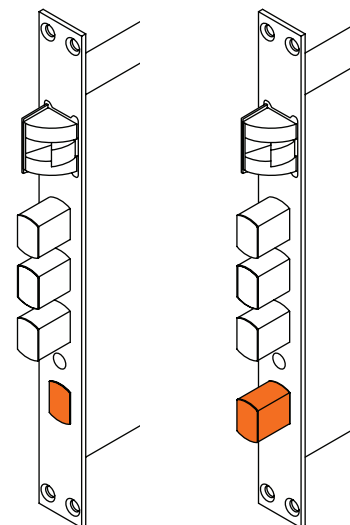
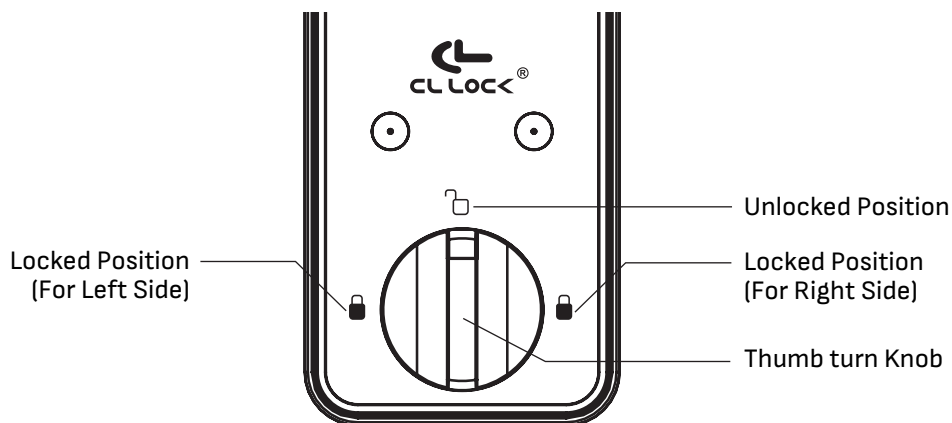
- Push the handle upwards; both latch sets extend and enter the **locked position**.

10.2 Unlocking with the Handle



1. Push the handle downwards and hold it, the latch bolt and deadbolt retract, entering the **unlocked position** and allowing the door to be opened.
2. Release the handle to return to its original position (automatically), the latch bolt extends, entering the **locked position**.

10.3 Locking and Unlocking the Deadbolt with the Thumbturn Knob



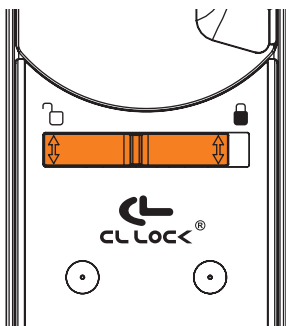
Unlocked state

Locked state

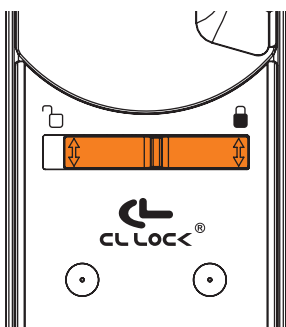
Turn the Thumb turn Knob 90 Degrees:

- To the **Locked Position**: The thumb turn bolt extends (engages).
- To the **Unlocked Position**: The thumb turn bolt retracts (disengages).

10.4 Locking from the Internal lock



When the internal lock switch is in the unlocked position (as shown in the illustration), both the administrator and regular users can enter and exit normally according to the registration method.

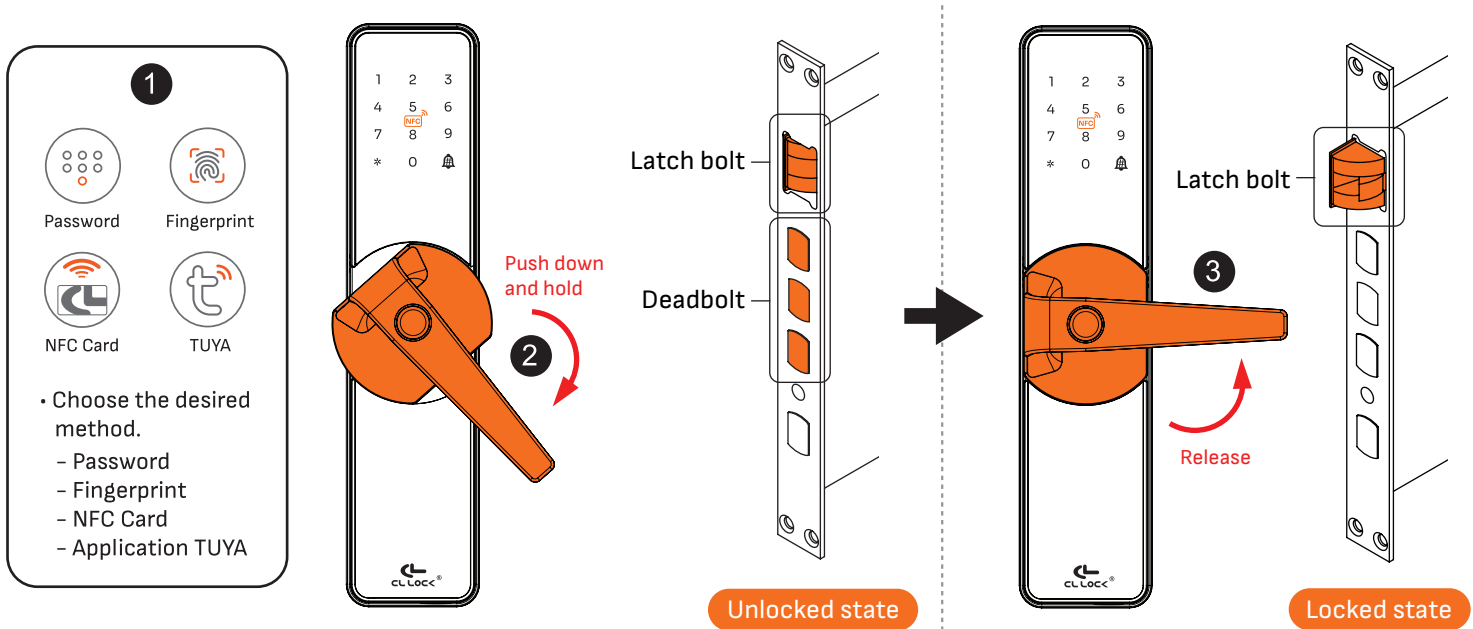


When the internal lock switch slides to the right (as shown in the illustration), the system will lock from the inside.

The administrator can enter and exit normally, but regular users will not be able to enter.

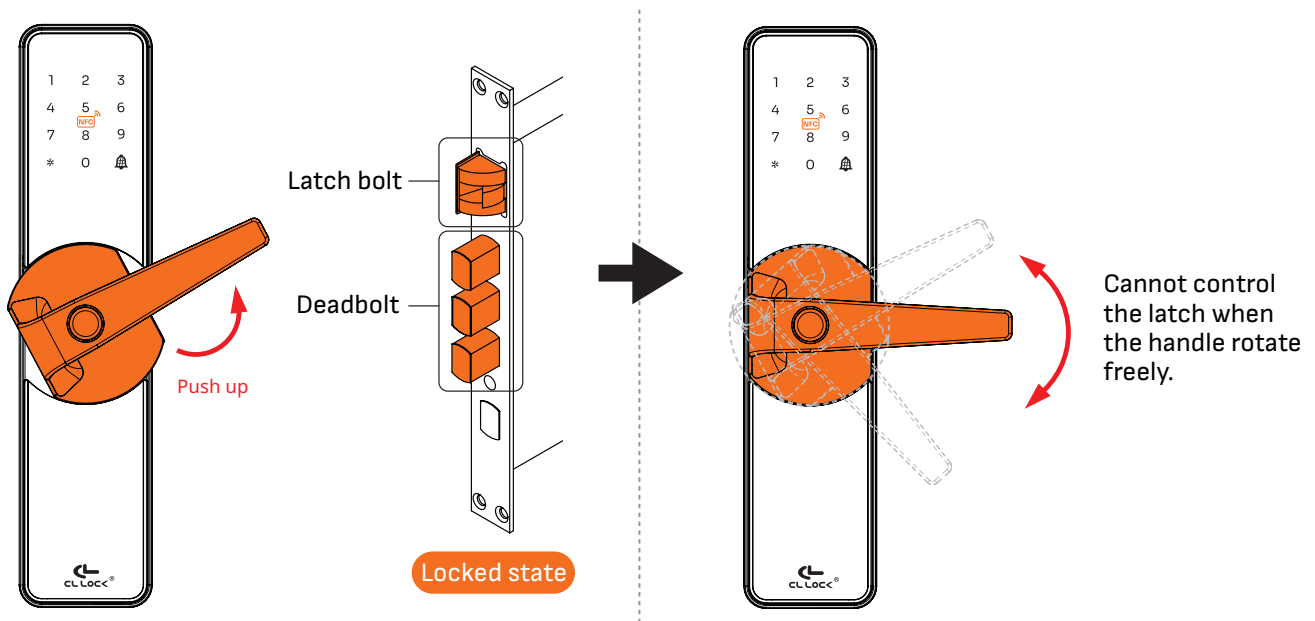
11.Lock / Unlock from the Outside

Unlocking from the Outside



1. Unlock using a registered password, fingerprint, NFC card, or mobile application.
2. Push the handle downwards and hold it, the latch bolt and deadbolt retract, entering the **unlocked position** and allowing the door to be opened.
3. Release the handle to return to its original position (automatically), the latch bolt extends, entering the **locked position**.

Locking with the Handle



Push the handle upwards both latch sets extend and enter the **locked position**.
(When the lock is in the **locked position**, the external handle will rotate freely and cannot control the latch sets to lock or unlock.)

12.Setup Instructions

Setup Instructions Enter Setup mode : Press * and #, the enter the administrator password (factory default is 123456#).

1.Administrator management

- 1.1 Add Administrator
 - Add Administrator ——— Enroll password, Fingerprint or NFC card:
 - Delete Administrator ——— Enter the ID user and press #

2.User management

- 2.1 Add User
 - Add User ——— Enroll password, Fingerprint or NFC card:
 - Delete User
 - Enter the ID user and press #
 - Delete All

3.System Setting

- 3.1 Time Setting ——— Enter Year/Month/Date and Time
- 3.2 Volume Adjustment
 - Volume Low
 - Volume Medium
 - Volume High
 - Mute
- 3.3 Normally Open
 - Start normally open mode
 - Close normally open mode
- 3.4 Double Verification
 - Open double verification mode
 - Close double verification mode
- 3.5 Anti Tampering
 - ON
 - OFF
- 3.6 Record Info

4.Network Setting

- ON
- OFF



Settings Video

Functions	Capacity
Fingerprint	100 ID
Password	200 ID
NFC Card	(Combined)
Total Capacity	300 ID

User Management

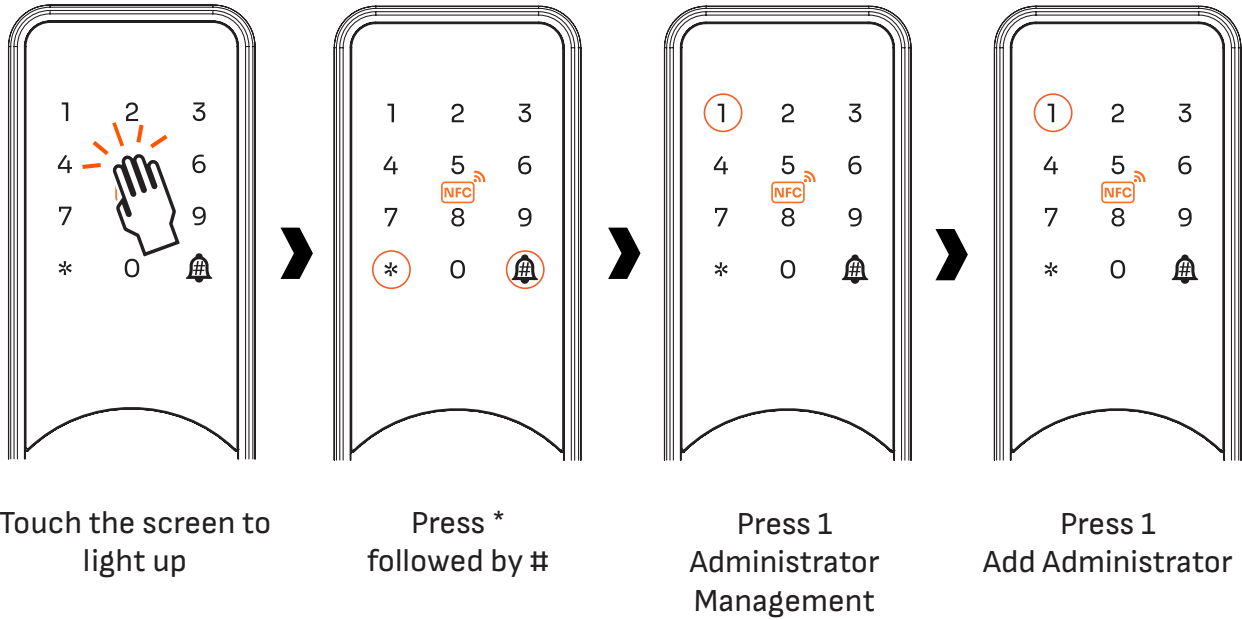
SEMI MEDIUM





13. Administrator Management

13.1 Add Administrator

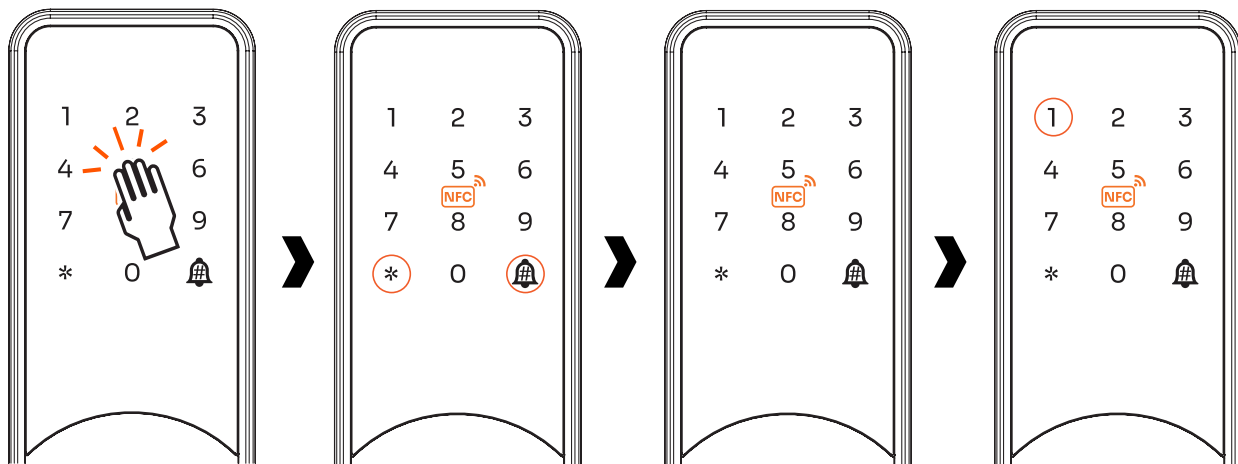


Select your desired option:

- Enter a password of 6-10 digits and press #
- Scan the NFC card
- Scan your fingerprint 5 times

- After registering the first admin, the factory code will change to "Admin."
- When registering a password, it must be entered twice to confirm the password.
- It is recommended to register the password first.
- When registering and using the NFC card, ensure the distance is between 0 - 30 millimeters for proper registration and usage.

13.2 Delete Administrator



Touch the screen to
light up

Press *
followed by #

Administrator
identity verification
Choose only one
method:
– Enter a password
and press #
– Scan the NFC card
– Scan fingerprint

Press 1
Administrator
Management



Press 2
Delete Administrator

Enter the user ID (1 digit No. 1-9)
and press #

- No. 0 cannot be deleted (in case of deletion, factory reset is required).

User Settings

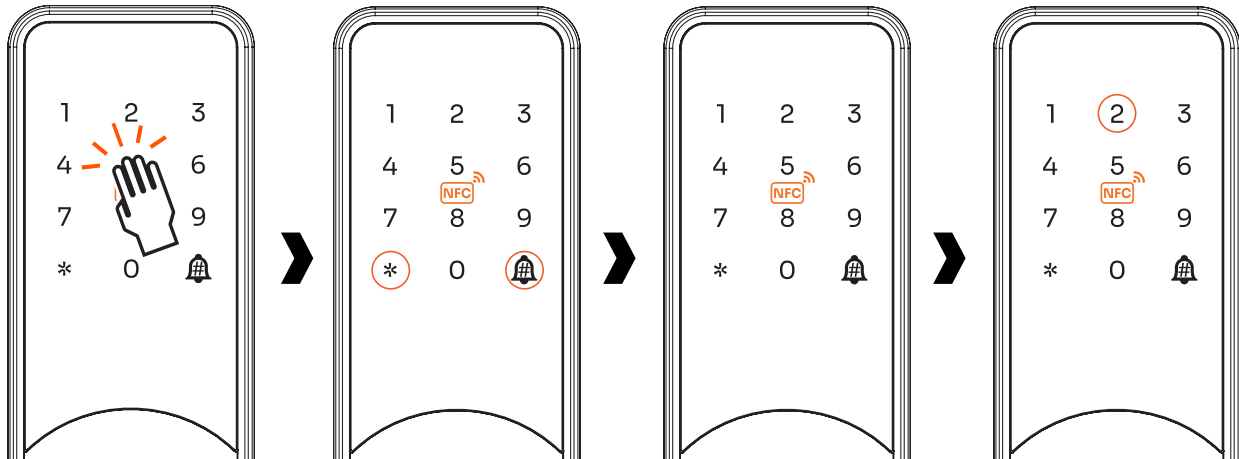
SEMI MEDIUM





14. User Settings

14.1 Add User



Touch the screen to
light up

Press *
followed by #

Administrator
identity verification
Choose only one
method:
- Enter a password
and press #
- Scan the NFC card
- Scan fingerprint

Press 2
User Management



Press 1
Add User

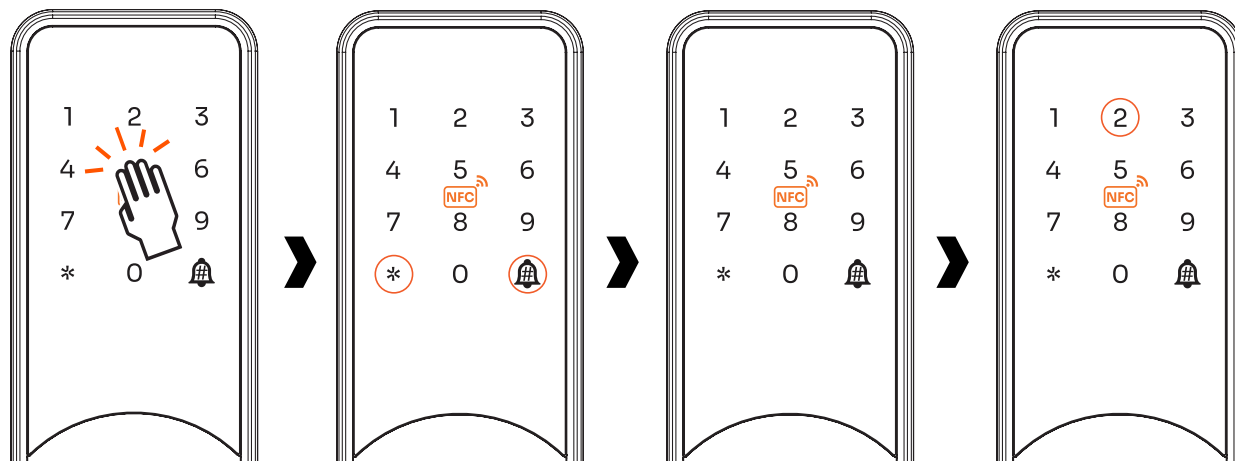


Select your desired option:

- Enter a password of 6-10 digits and press #
- Scan the NFC card
- Scan your fingerprint 5 times

- When registering a password, it must be entered twice to confirm the password.
- When registering and using the NFC card, ensure the distance is between 0 - 30 millimeters for proper registration and usage.

14.2 Delete User

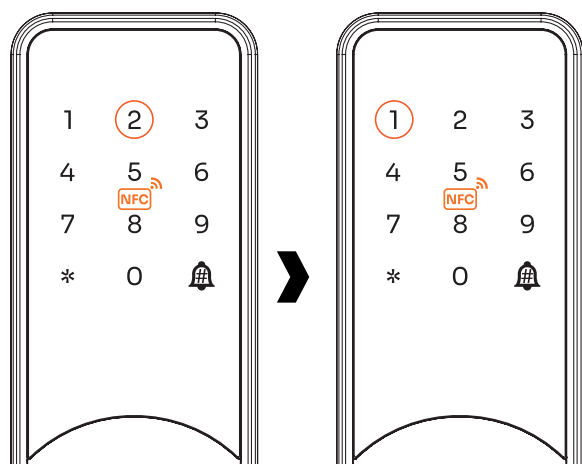


Touch the screen to
light up

Press *
followed by #

Administrator
identity verification
Choose only one
method:
- Enter a password
and press #
- Scan the NFC card
- Scan fingerprint

Press 2
User Management

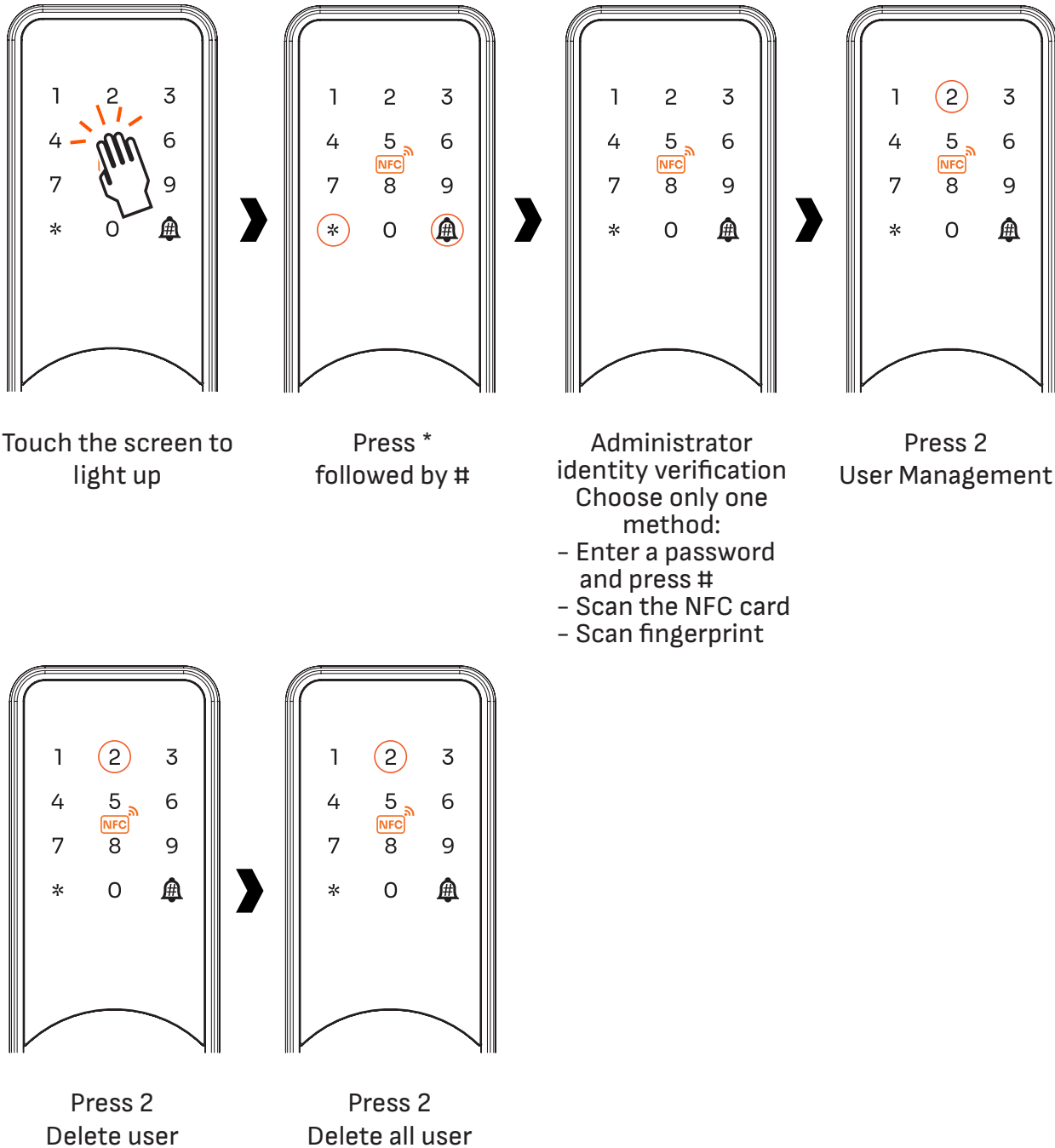


Press 2
Delete Management

Press 1
Delete by number

Enter the user ID
(2-3 digits) and press #

14.3 Delete All Users



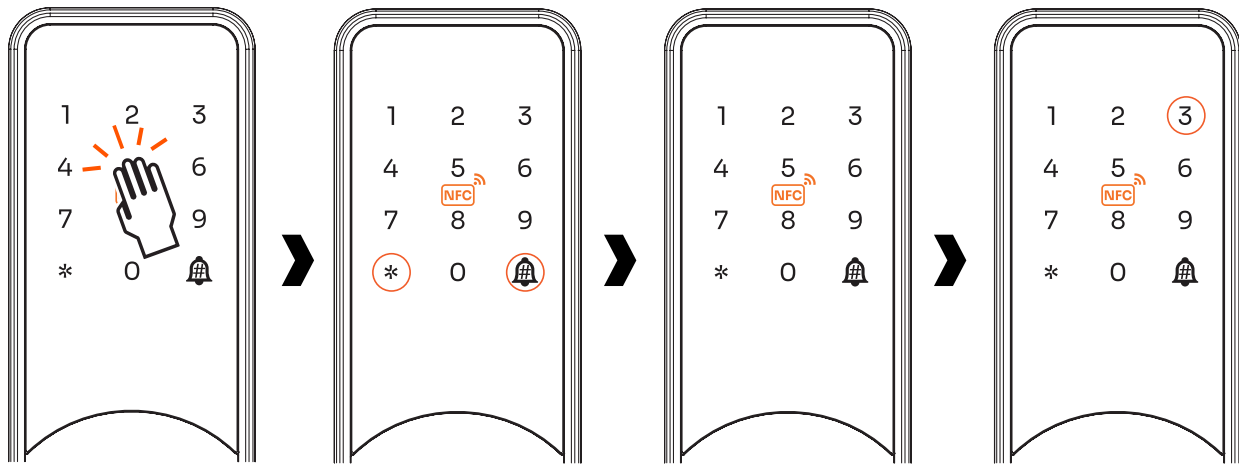
System Settings

SEMI MEDIUM



15. System Settings

15.1 Time Setting



Touch the screen to light up

Press * followed by #

Administrator identity verification
Choose only one method:
- Enter a password and press #
- Scan the NFC card
- Scan fingerprint

Press 3 System Settings



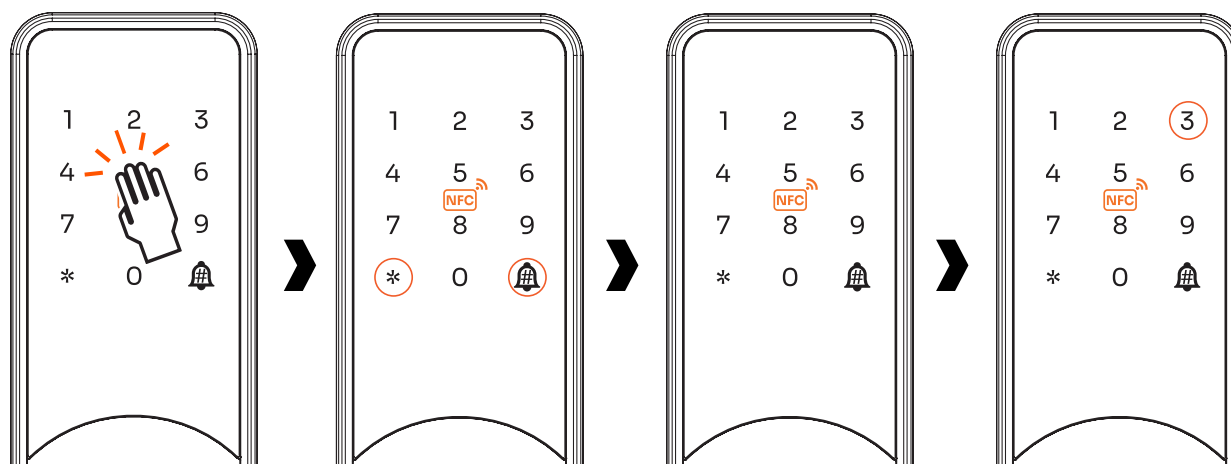
Press 1
Time setting

Enter year as a 4-digit number.
Enter month as a 2-digit number.
Enter day as a 2-digit number.
Enter time:
Hour as a 2-digit number.
Minute as a 2-digit number.

Then, the system will review the year-month-day and hour-minute. After that, press #."

- If connected to the application, the date and time will be set automatically.
- Enter the year in AD only

15.2 Volume Adjustment

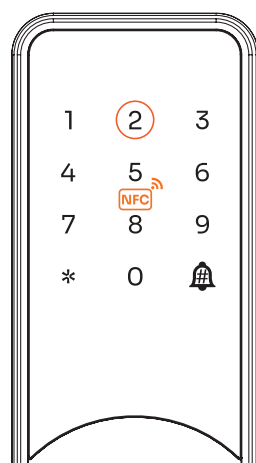


Touch the screen to
light up

Press *
followed by #

Administrator
identity verification
Choose only one
method:
- Enter a password
and press #
- Scan the NFC card
- Scan fingerprint

Press 3
System Settings

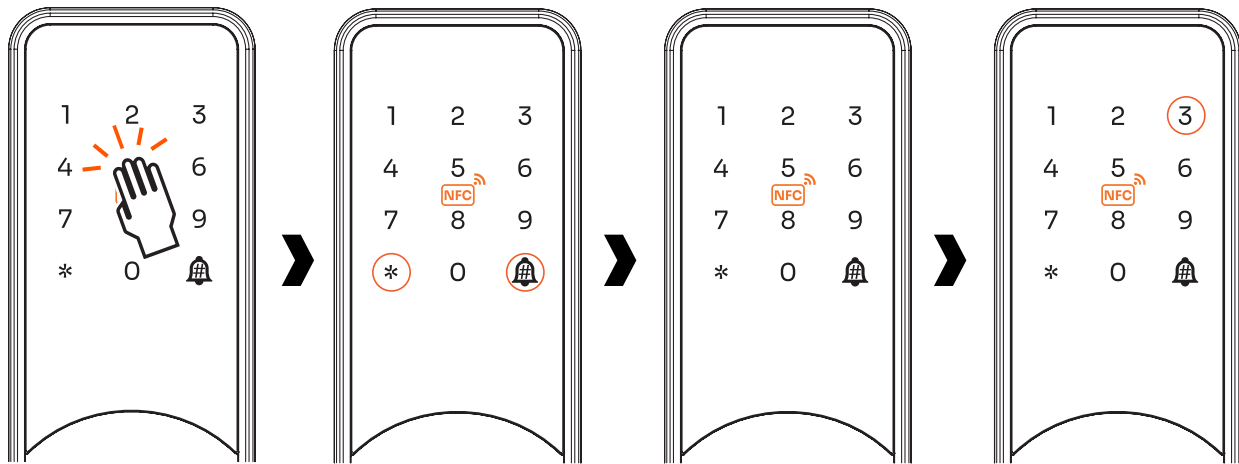


Press 2
Volume Adjustment

Select your desired option:

Press 1 for low volume.
Press 2 for medium volume.
Press 3 for high volume.
Press 4 to mute.

15.3 Normally Open



Touch the screen to
light up

Press *
followed by #

Administrator
identity verification
Choose only one
method:
- Enter a password
and press #
- Scan the NFC card
- Scan fingerprint

Press 3
System Settings

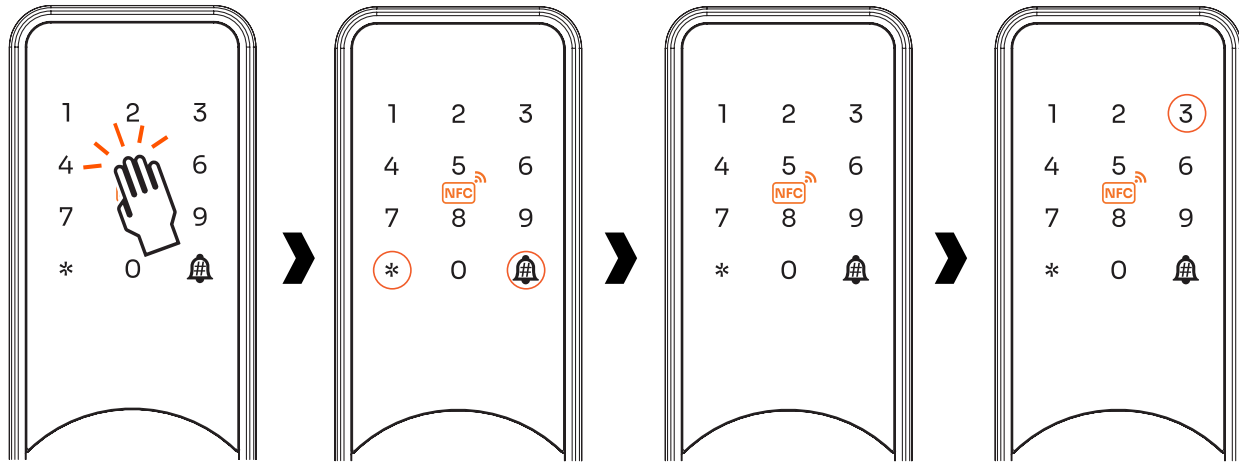


Press 3
Normally Open

Select your desired option:
Press 1 to turn on.
Press 2 to turn off.

- Unlock once first and ensure the always-on mode is activated before proceeding.

15.4 Double Verification



Touch the screen to
light up

Press *
followed by #

Administrator
identity verification
Choose only one
method:
- Enter a password
and press #
- Scan the NFC card
- Scan fingerprint

Press 3
System Settings

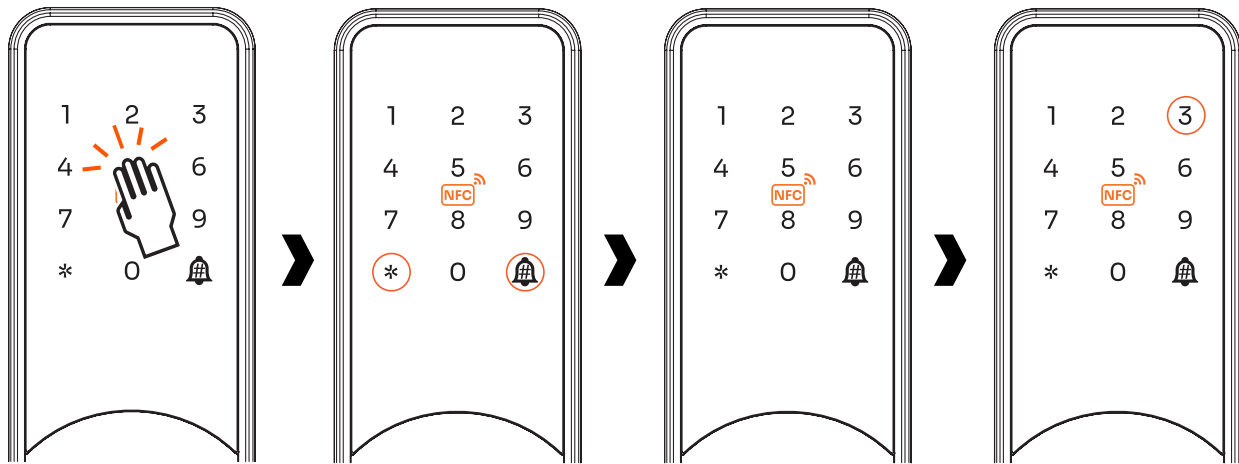


Select your desired option:

Press 1 to turn on.
Press 2 to turn off.

Press 4
Double Verification

15.5 Anti-Tampering (ON/OFF)



Touch the screen to
light up

Press *
followed by #

Administrator
identity verification
Choose only one
method:
- Enter a password
and press #
- Scan the NFC card
- Scan fingerprint

Press 3
System Settings



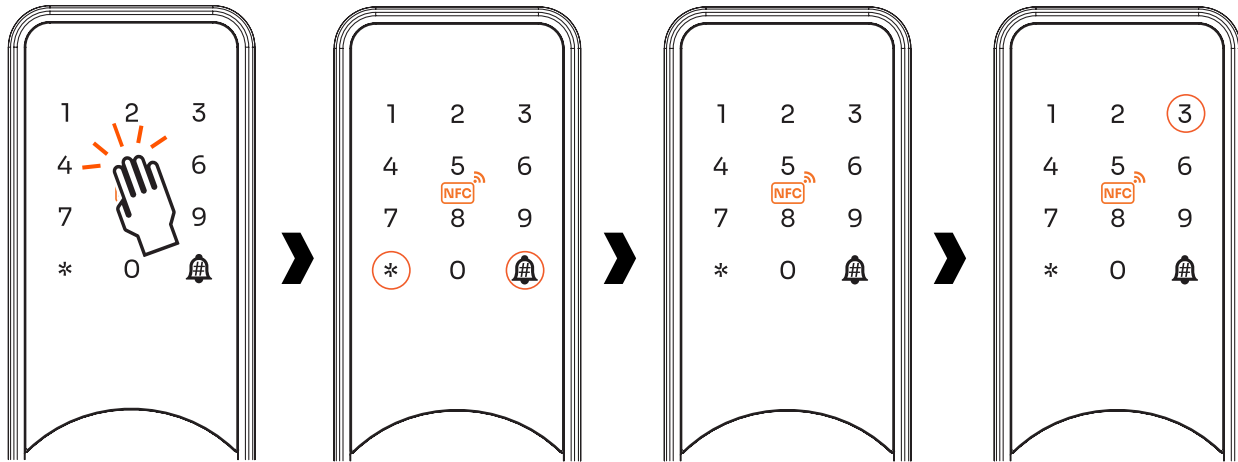
Press 5
Anti Tampering

Select your desired option:

Press 1 to turn on.
Press 2 to turn off.

* When a factory reset is performed, the anti-tampering system must be reconfigured each time.

15.6 Record Info

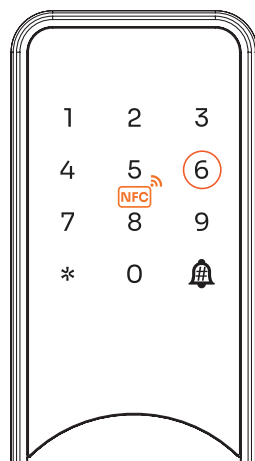


Touch the screen to
light up

Press *
followed by #

Administrator
identity verification
Choose only one
method:
- Enter a password
and press #
- Scan the NFC card
- Scan fingerprint

Press 3
System Settings



Press 6
Record Info

System Voice Announcement for the Latest Unlock

The system will announce the most recent unlocking event as follows:

Sequence: 0

Unlock Type: Admin - Fingerprint

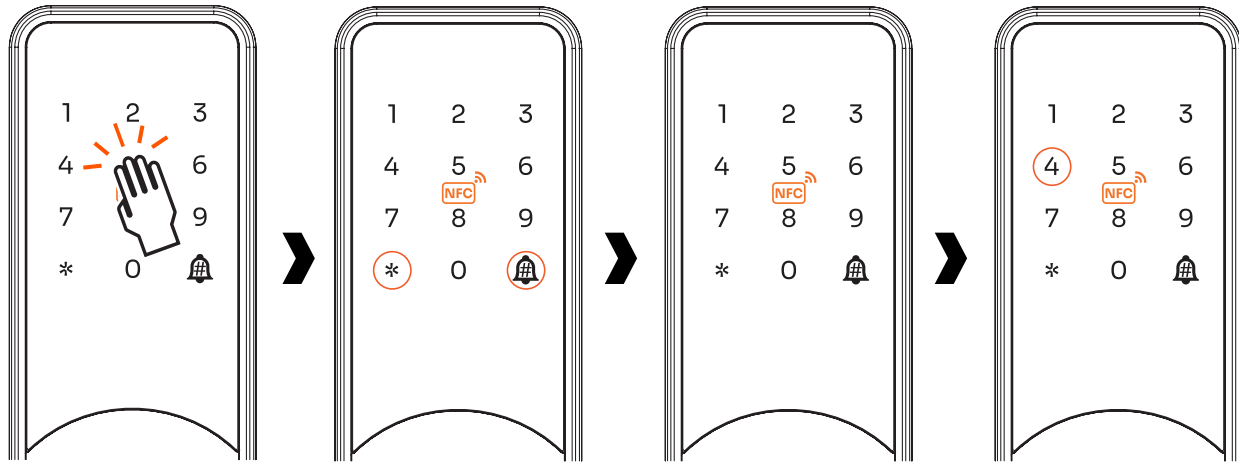
Door Unlock Time: Year 2024, Month 11, Day 06, Hour 12, Minute 41

Remote Management

SEMI MEDIUM



16. Network Setting



Touch the screen to
light up

Press *
followed by #

Administrator
identity verification
Choose only one
method:
- Enter a password
and press #
- Scan the NFC card
- Scan fingerprint

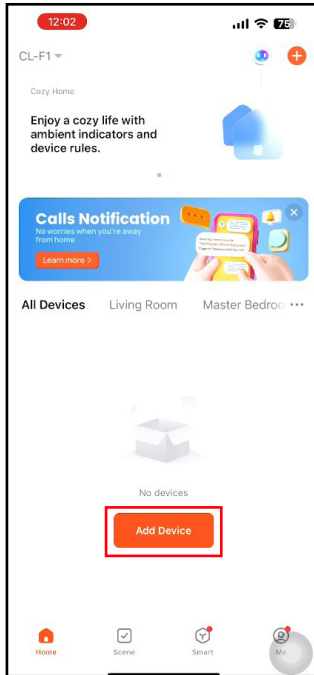
Press 4
Network setting



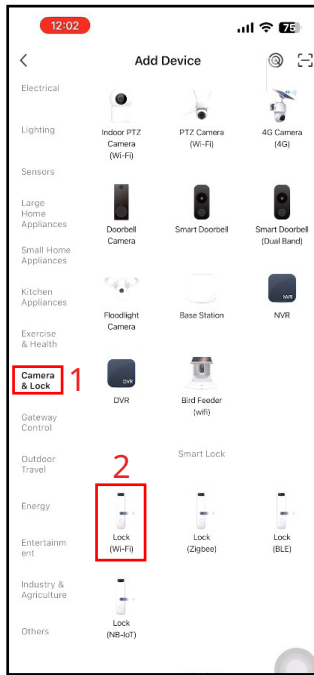
Select the option you want:

Press 1 to turn on.
Press 2 to turn off.

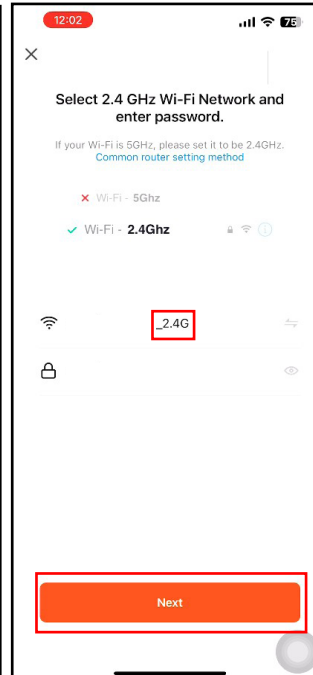
* When the battery is low, the application cannot be connected.



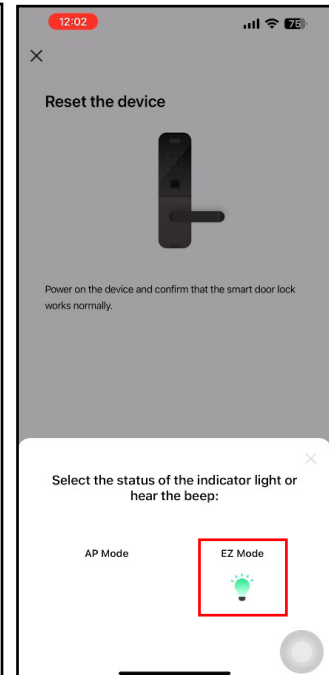
Open the TUYA app and press Add Device



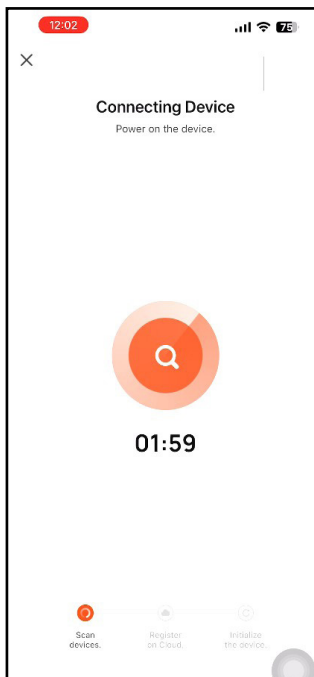
Press Camera & Lock and then press Lock (Wi-Fi)



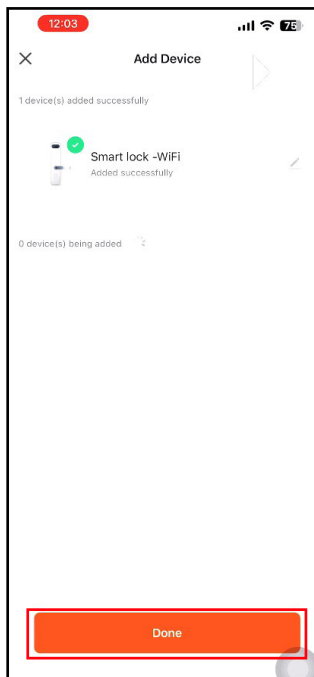
Check the Wi-Fi and then press Next



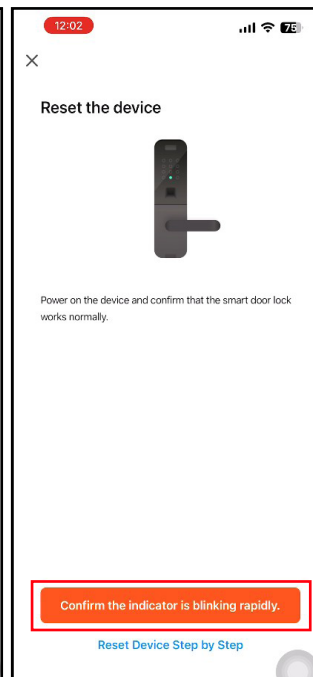
Press EZ Mode



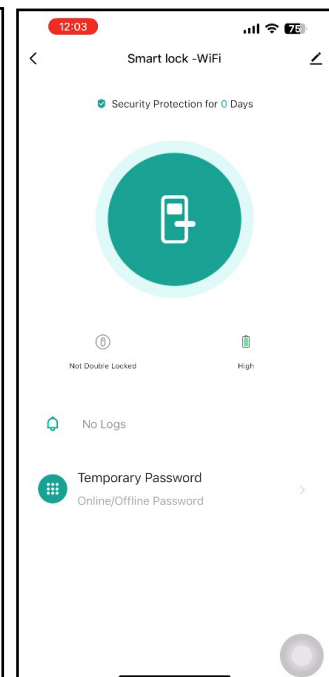
The system is establishing the connection.



Press Done



Press Confirm the indicator is blinking rapidly



Connection successful

17.Languages Code

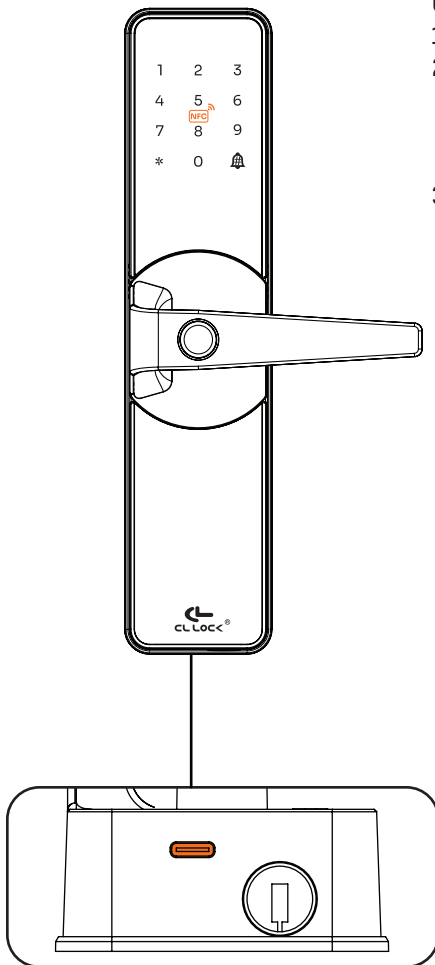
English	555666880#
Vietnamese	555666881#
Portuguese	555666882#
Arabic	555666883#
Russian	555666884#
Thai	555666885#
Spanish	555666886#
Indonesian	555666887#
Chinese	555666888#

18.USB-C Port Usage

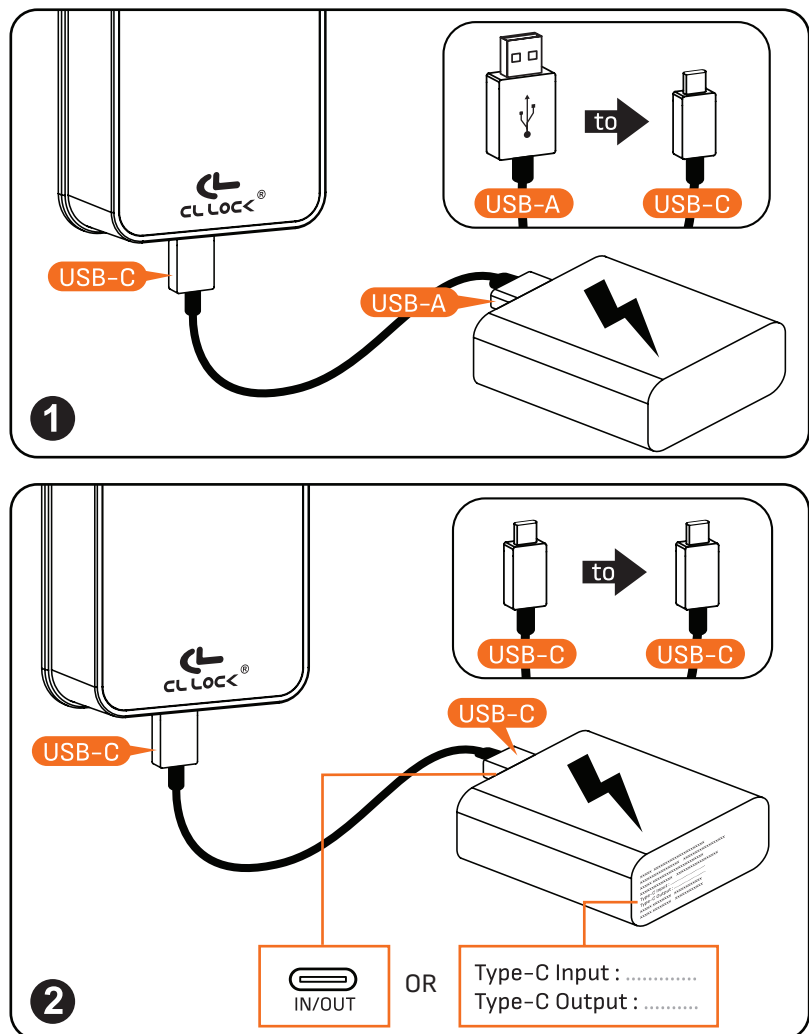
Using the USB-C port

Using Backup Power from a Power Bank

- 1.You can connect using a USB-A to USB-C cable (see Image 1).
- 2.You can use a USB-C to USB-C cable only if the Power Bank's port specifies it supports both Input and Output (IN/OUT) in the same port. The manufacturer may display this information in different locations, such as directly on the port or in the Power Bank's specifications (see Image 2).
- 3.In an emergency, if the battery runs out and the lock is engaged:
Users cannot replace the battery because the battery compartment is installed internally. You can connect the Power Bank to the USB-C port located at the bottom of the lock to continue using it. Afterward, it is recommended to replace the battery immediately.

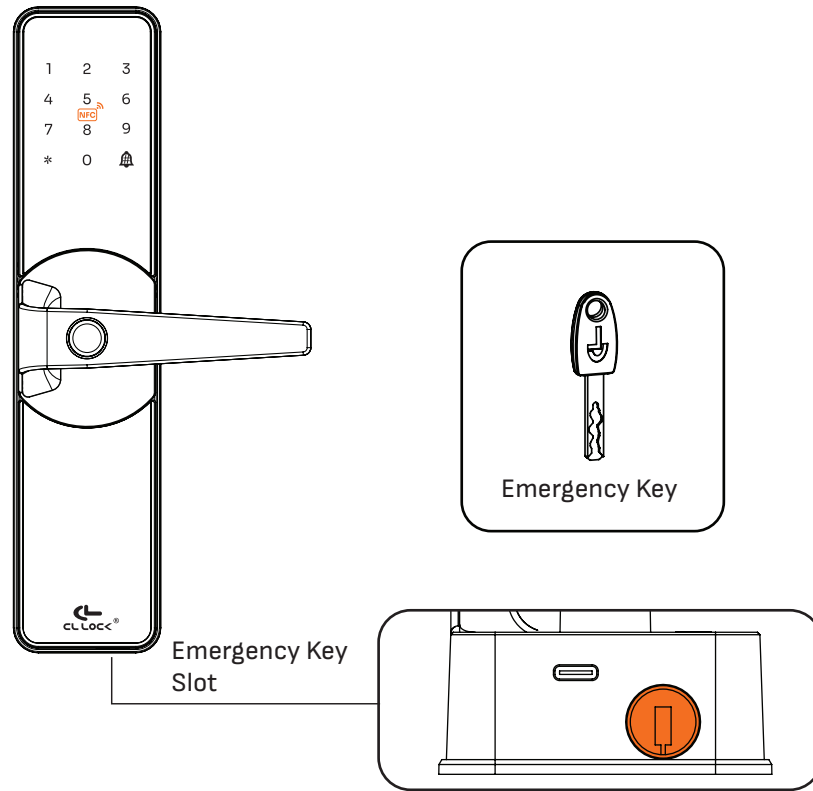


USB-C Port
(For Backup Power)



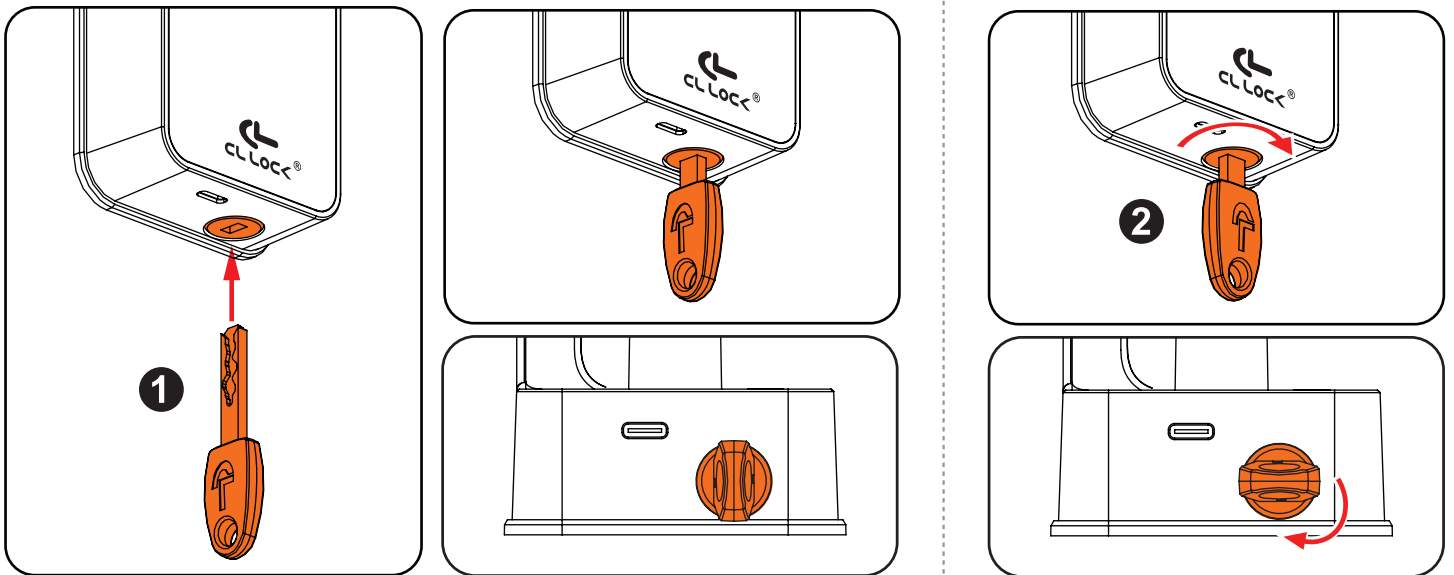
19.Unlocking with the Emergency Key

Using the Emergency Key

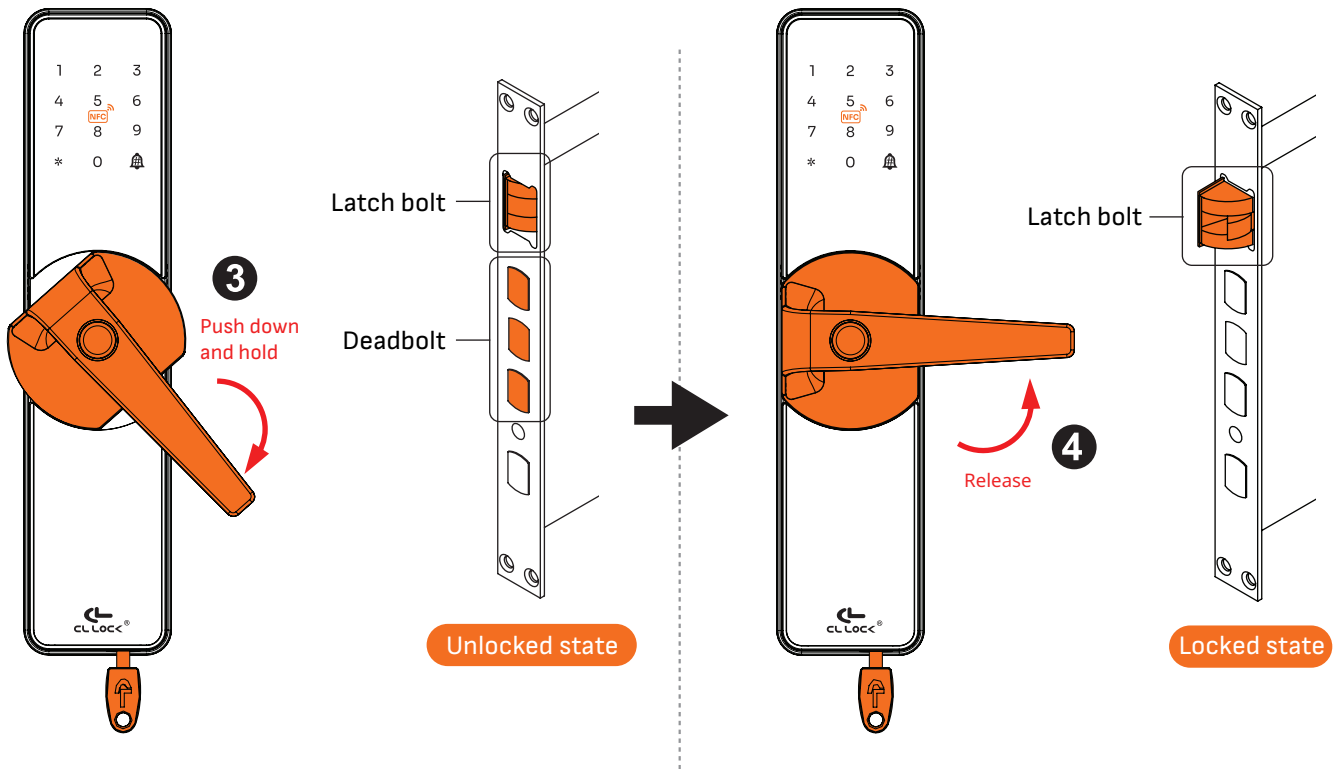


Unlocking with the Emergency Key

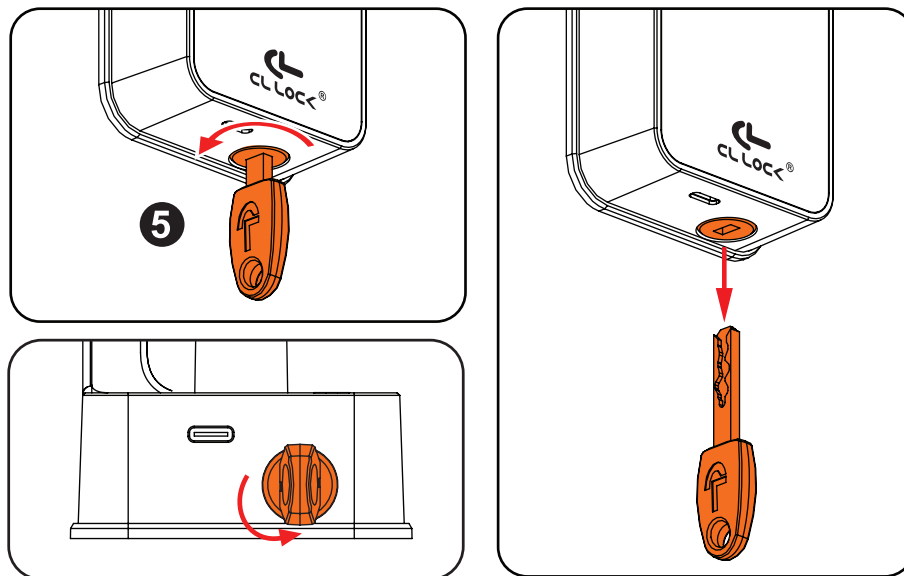
1. Insert the emergency key into the bottom of the lock.
2. Turn the emergency key clockwise until it stops.



3. Push the handle downwards and hold it, the latch bolt and deadbolt retract, entering the **unlocked position** and allowing the door to be opened.
4. Release the handle to return to its original position (automatically), the latch bolt extends, entering the **locked position**.



5. Turn the emergency key counterclockwise until it stops to remove the key.



20. Product Warranty Policy

1. The warranty sticker attached to the product must be intact, not torn or missing (see the illustration).

Serial Number



Internal handle lock

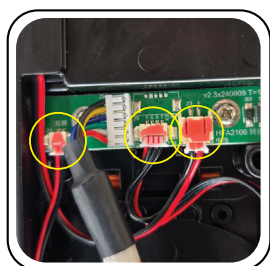


Battery cover



External handle lock

2. Removing the red terminal from the circuit board will immediately void the warranty. (See illustration)



3. Any damage to the device, such as breakage, cracking, dents, burns, electrical short circuits, chipping, bending, warping, fractures, falls, punctures, water intrusion, scratches on the circuit board, or missing parts (e.g., screen, body, buttons), will result in the warranty being voided immediately.
4. Damage caused by accidents, fires, natural disasters (e.g., lightning, floods, earthquakes, severe weather), or insects and animals will result in the warranty being voided immediately.
5. Damage caused by improper use, connecting incompatible devices, unauthorized repairs or modifications, or using non-genuine replacement parts will result in the warranty being voided immediately.
6. Products exhibiting abnormal conditions not caused by normal usage or improper storage (e.g., adhesive residue, oxidation stains, watermarks, animal droppings, rust, or broken circuit traces) will result in the warranty being voided immediately.
7. The company reserves the right to reject product returns if the customer is dissatisfied with the product after it has been unboxed or used.
8. The company reserves the right to amend or change warranty conditions without prior notice.

21.Safety Manual and Precautions

1. Alkaline batteries: Please do not bring them near a fire source to prevent the risk of explosion.
2. Please do not attempt to disassemble the product to avoid damage.
3. Do not scratch the fingerprint scanner with sharp objects as it may cause permanent damage.
4. Do not leave the product in areas where water may leak or splash.
5. Do not connect the device to household wiring.
6. For cleaning, please wipe with a soft cloth.
7. Do not remove the battery during the setup process.
8. After receiving a low battery warning for the key, please replace the battery immediately.
9. Do not use rechargeable batteries as they may cause excessive power and potentially damage the device's functionality.

22.Additional Information

1. When the battery drops below 4.8–5 volts, a warning will be displayed to replace the battery. If the battery drops below 4.2 volts, the key will automatically shut down.
2. To set the time, enter the year, month, day, and time. Please sync with the application to ensure accurate time.
3. During the setup process, if there is no action within 10 seconds, the system will automatically exit.

